

# Head Capacity Curve Graph

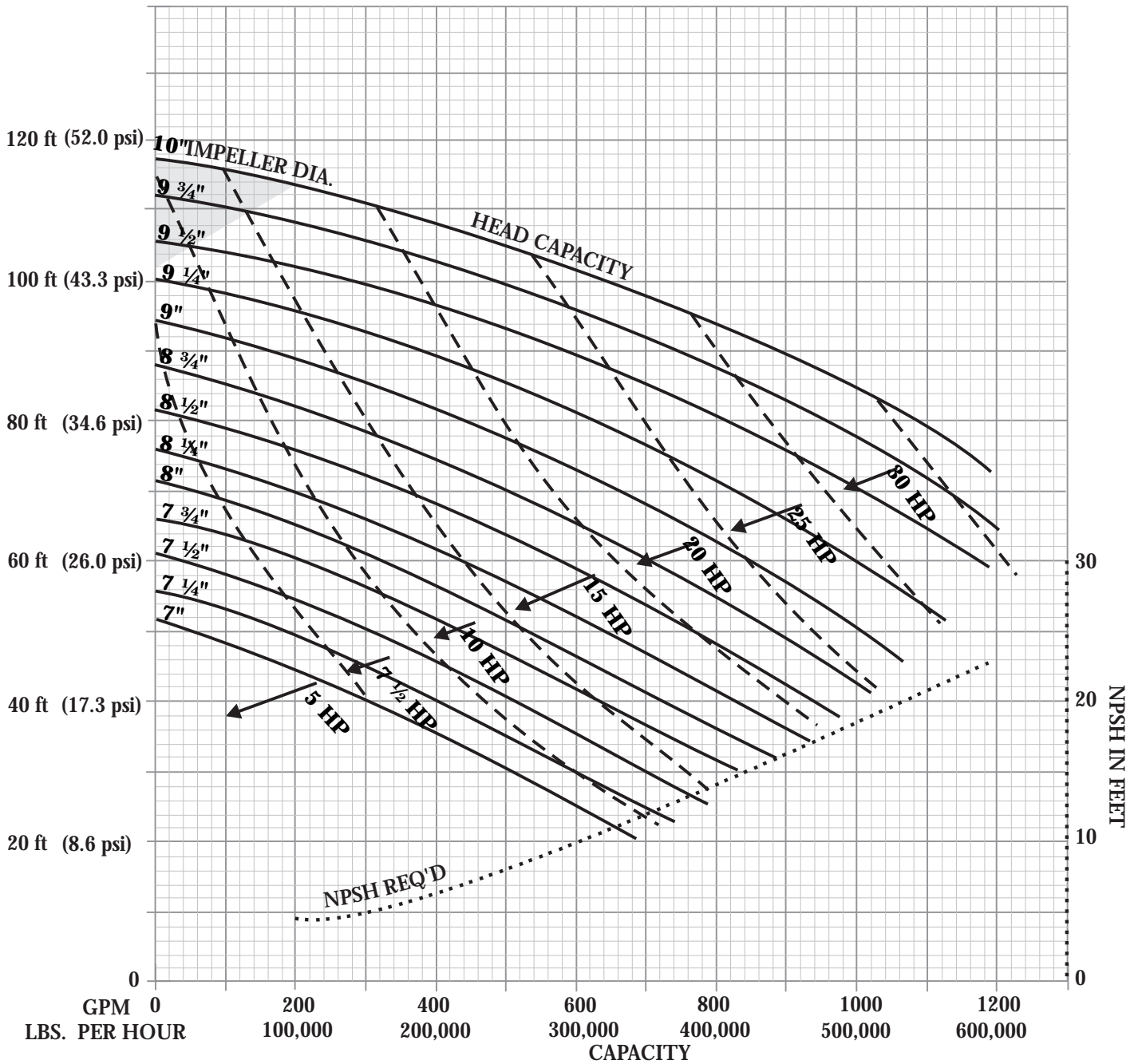
# Size 4410 Pumps

**STANDARD INLET PUMP  
(Volute Type Casing)**

**For All Size 4410 Pumps, Speed 1750 RPM  
Inlet 4" – Outlet 4"**

All curves are typical performance curves, not Certified, and should be applied for guideline purposes only.

**IMPORTANT: Contact Tri-Clover for guidance if application falls in shaded area.**



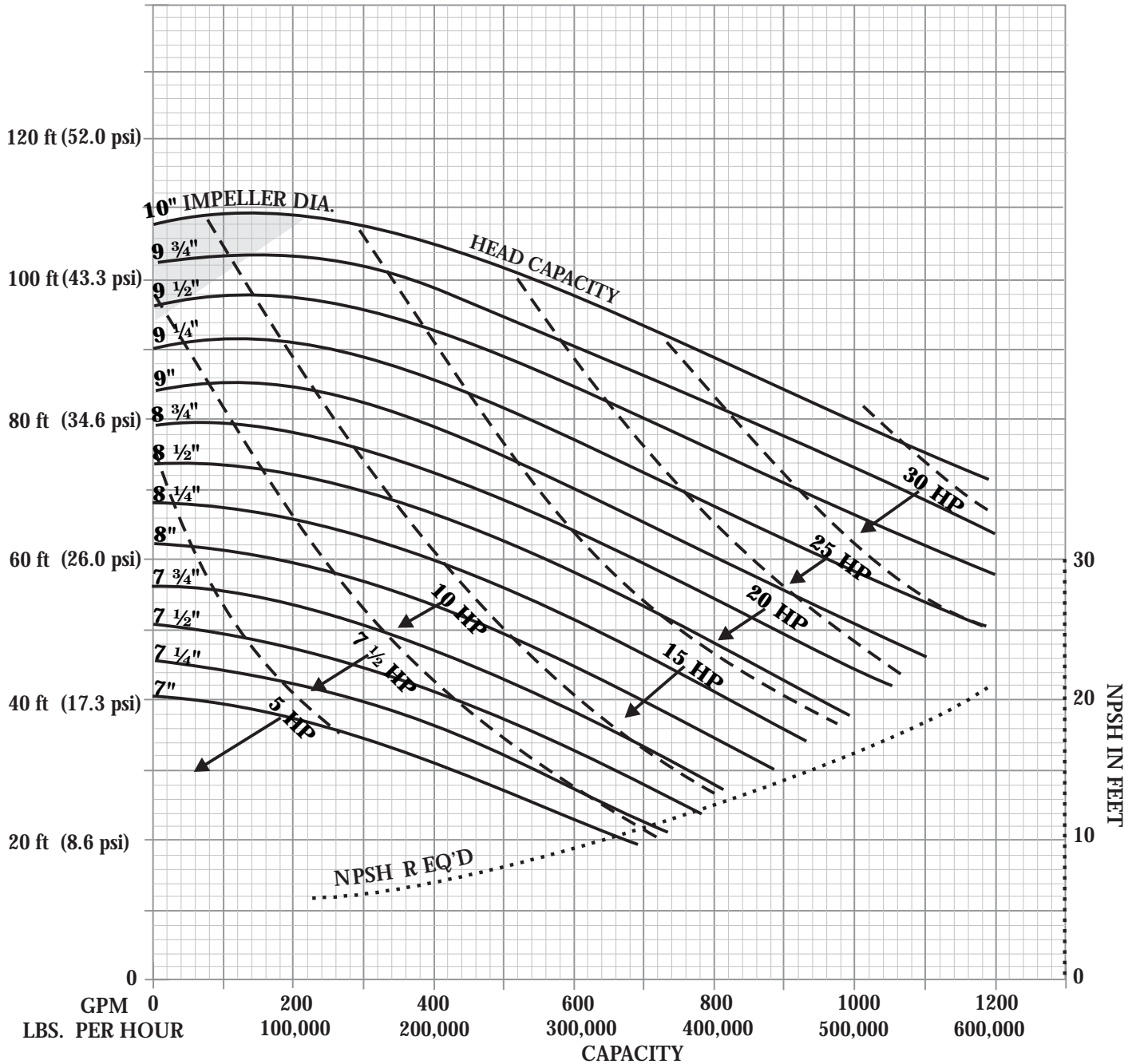
For vacuum withdrawal applications contact Tri-Clover Inc.

# ENLARGED INLET PUMP (Volute Type Casing)

For All Size 4410 Pumps, Speed 1750 RPM  
Inlet 6" – Outlet 4"\*

All curves are typical performance curves, not Certified, and should be applied for guideline purposes only.

**IMPORTANT:** Contact Tri-Clover for guidance if application falls in shaded area.



\*Pump supplied with 6" x 5" eccentric reducer on inlet (casing inlet is 5"). Information on full 6" inlet available on application  
For vacuum withdrawal applications contact Tri-Clover Inc.